

```

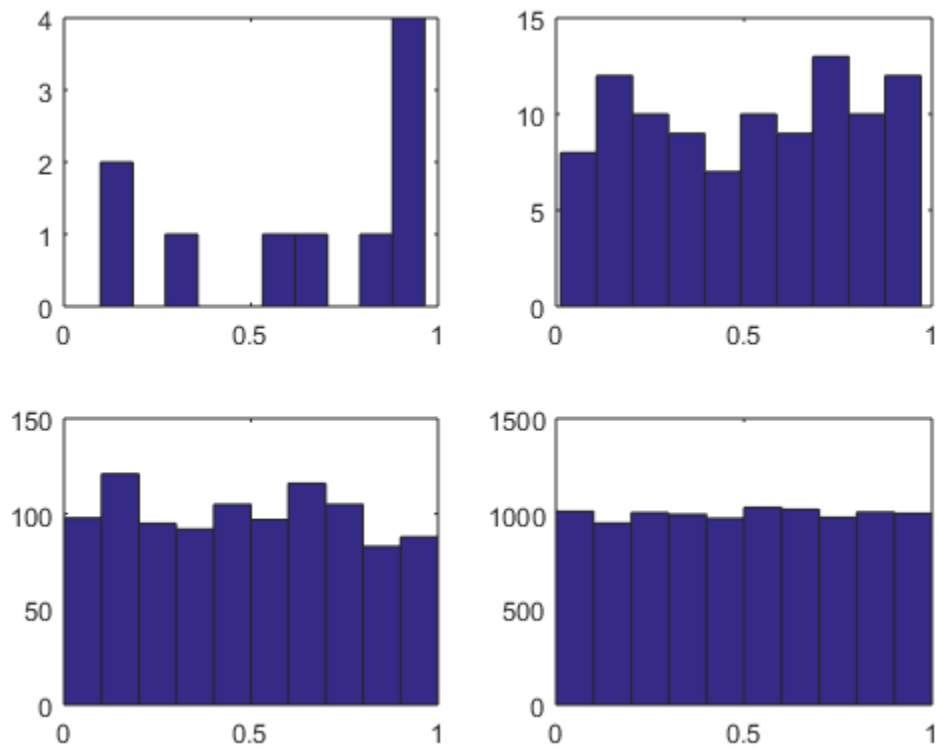
results = zeros(3,3);
for i = 1:4
    sample = rand(1,10^i);
    results(i,1) = 10^i;
    results(i,2) = mean(sample);
    results(i,3) = var(sample);
    subplot(2,2,i), hist(sample);
end
format shortEng
format compact % check out the MATLAB help pages for more info
results

```

```

results =
    10.0000e+000    623.8553e-003    119.6136e-003
   100.0000e+000    514.7916e-003    81.7870e-003
   1.0000e+003    488.4647e-003    80.4498e-003
  10.0000e+003    501.6219e-003    83.0220e-003

```



Published with MATLAB® R2015a